



ANNUAL DONOR
REPORT 2021

Dear Donor,

Thank you for choosing Changi General Hospital Health Fund (CGHHF). A fund that creates an environment that nurtures innovation, support healthcare research for enhanced future health outcomes, train young and promising healthcare professionals, and patient care for those who need financial support within and beyond the hospital setting.

CGHHF has many options that a donor can choose to support, including Breast cancer, Dementia and Delirium, Emergency Medicine and HomeCare Assist among many others. This allows our donors to select the causes closest to their hearts.

We at CGH would like to take this opportunity to express our utmost gratitude for your support of the work we do and look forward to your continued support of Healthcare through CGHHF.

Your gift today makes an impact and enable us to build a strong foundation for health care in Singapore for the future.

Marc Chan
Assistant Director
Development Office, CGH

“

We know only too well that what we are doing is nothing more than a drop in the ocean. But if the drop were not there, the ocean would be missing something.

Mother Teresa

”



SHARE YOUR JOY BY MAKING A DONATION

TO THE FUND TO MARK YOUR MILESTONES IN LIFE



New job or career
advancements

Birthdays or
anniversaries



New additions
to the family

Weddings or
engagements





Changi
General Hospital
SingHealth

**We remain steadfast in our dedication to
healthcare excellence for our patients.**



VISION

Inspire Innovation, Better Health, Better Lives.



MISSION

Delivering better health through person-centred care,
research, innovation, education and community programs.

BOARD MEMBERS

Dr Gerard Ee

Mr Johnny Tan

Ms Jessica Tan

Mr Roy Quek

Prof Ng Wai Hoe



Our Blueprint For Better Health

To translate our mission into action, we have identified three areas of growth and three programmes that serve as the Fund's roadmap for the next few years. These points of focus, which are laid out in this section, will unlock as well as accelerate the potential of healthcare excellence within CGH and beyond.

Underpinning Health and Well-being with

» RESEARCH

Clinical research is the backbone of medicine; it facilitates the pioneering of medical treatments that benefit our larger community. Today, patients enjoy high standards of medical care due to the development of new therapies derived from research.

CGH provides excellent clinical care to our patients, while progressively expanding our research footprint. The hospital's strength lies in translational research, which seeks to take medical discoveries in a laboratory setting and apply them into a real-world setting to advance and improve patient care.

Through the collective expertise of our Clinical Trials and Research Unit and Health Services Research department, CGH Health Fund aims to invest in continuing research to sustain and improve standards of healthcare for future generations.

Looking forward:

exercise
& sleep

illness &
recovery

nutrition &
metabolism

Optimising Patient Care Through **INNOVATION** «

With new diseases, increasing complexities and evolving societal needs, healthcare cannot stay stagnant, nor can we rely on yesterday's solutions.

Innovation is not new to CGH. As the home to the Centre for Innovation, Centre of Healthcare Assistive and Robotics Technologies, and Nutrition Health for Elderly Reference Centre, our healthcare staff are armed with the necessary tools to generate ground-breaking ideas rooted in person-centred care.

CGH Health Fund recognises the urgency to incubate and accelerate innovative solutions to prepare ourselves for the healthcare challenges that await us in the horizon.

Looking forward:

active &
engage

life &
space

nutrition &
metabolism

sleep &
wellness

Bolstering Medical Professionals Through **EDUCATION** «

Clinical education plays a critical role in inculcating our future healthcare professionals and leaders with the right values in practicing the art and science of medicine. As new generations of doctors, nurses and allied health professionals enter the workforce and new clinical best practices emerge, the hospital must cultivate relevant and current learning opportunities and approaches.

The Fund endeavours to drive initiatives that leverage on emerging technologies and build the competencies of our hospital's healthcare staff so that they can provide holistic care to our patients.

Looking forward:

simulation

gamification

technology-enhanced
learning

interprofessional
education

adult
learning

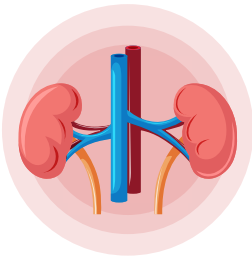
» Championing PATIENTS IN NEED

HomeCare Assist (HCA) is CGH's long-standing patient welfare programme supported by the CGH Health Fund. In line with the hospital's mission of delivering patient care with passion and empathy, HCA provides interim assistance to needy patients with chronic illnesses or conditions to ensure that they have the means to continue to be cared for in their own homes after discharge from CGH.

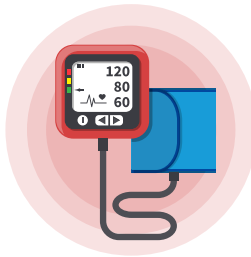
Through HCA, like-minded individuals often come together to build an inclusive society and empower our patients to prioritise their recovery and health.

HCA distributed over
\$400,000
of help to the needy patients in FY2021

TOP 3 ASSISTANCE:



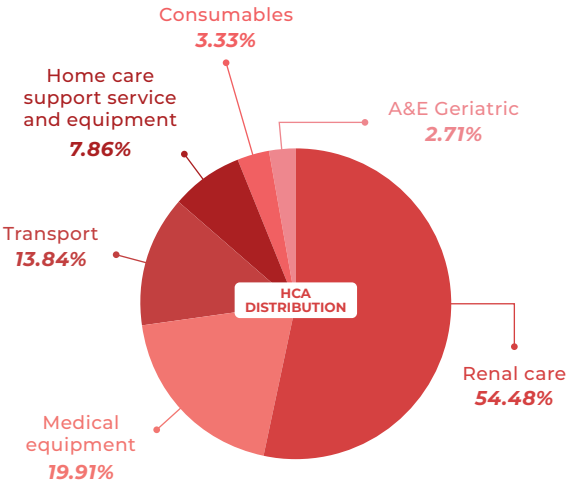
Renal care
accounts for 54.5% of the total expenditure



Medical equipment
accounts for 19% of the total expenditure

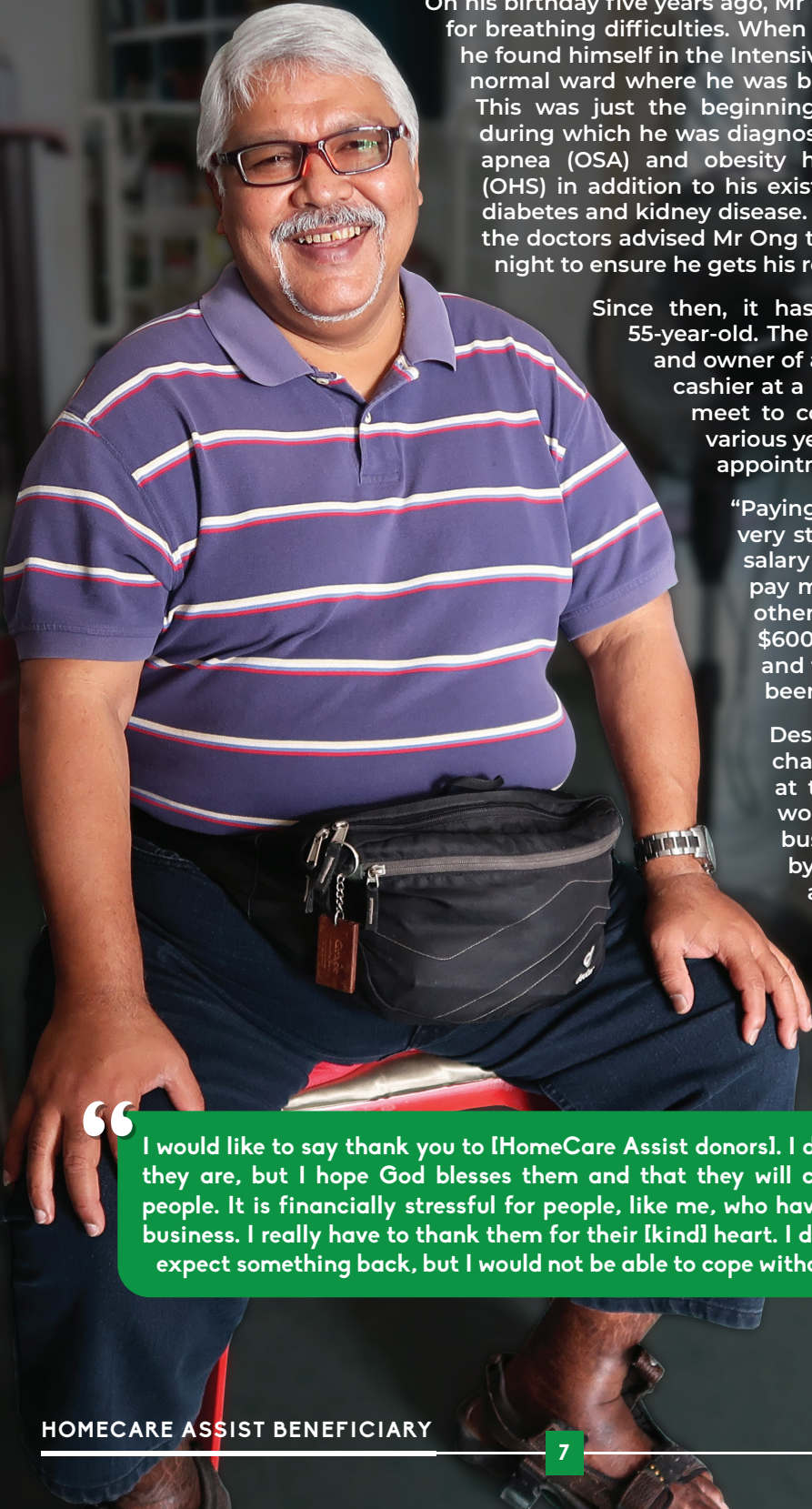


Transport services
To send a frail patient home after discharge accounts for 13.8% of the total expenditure



Social Services
From left: Joanne Quek Soo Hui, Chua Geok Eng Anna, Dr Goh Soon Noi, Katherine Tay Sui Loon, Goh Chiang Choo

LIFE CAN TURN



On his birthday five years ago, Mr Ong was admitted to CGH for breathing difficulties. When he woke up the next day, he found himself in the Intensive Care Unit instead of the normal ward where he was brought in for observation. This was just the beginning of his three-week stay, during which he was diagnosed with obstructive sleep apnea (OSA) and obesity hypoventilation syndrome (OHS) in addition to his existing medical conditions—diabetes and kidney disease. To manage OSA and OHS, the doctors advised Mr Ong to use a BiPAP machine at night to ensure he gets his required levels of oxygen.

Since then, it has not been easy for the 55-year-old. The former nightlife manager and owner of a pub currently works as a cashier at a petrol kiosk to make ends meet to cover his medications and various yearly medical appointments.

“Paying for my medical fees is very stressful and taxing...with a salary of about \$1,300. I need to pay my rent of \$400 and settle other payments, which is about \$600. What about daily food and transport costs? It has not been easy.”

Despite having to completely change his lifestyle and start at the bottom after years of working and running his own business, Mr Ong is buoyed by the generosity of friends and strangers alike.

**Mr Ong Eng Tiong,
HCA beneficiary**

“

I would like to say thank you to [HomeCare Assist donors]. I do not know who they are, but I hope God blesses them and that they will continue to help people. It is financially stressful for people, like me, who have failed in their business. I really have to thank them for their [kind] heart. I do not think they expect something back, but I would not be able to cope without [their help].

”

RN ON A DIME

When his breathing stopped in the middle of the night, Richard's wife and children were worried what could happen to him next. Richard was trying hard to breathe but his airway was blocked. Even after a full night's sleep, Richard was still overwhelmed by daytime fatigue caused by the interrupted sleep. This posed a serious threat to the 58-year old taxi driver when he could not concentrate on the road.

Richard went for a sleep test and stayed for a night at the hospital. He was later diagnosed with Obstructive Sleep Apnea. The complications of Obstructive Sleep Apnea include severe daytime drowsiness, fatigue and irritability. Richard recalled that his mind went blank one day while he was driving and he got into an accident.

To help Richard cope with his Obstructive Sleep Apnea, the doctor prescribed him with the Cipap mask and Cipap machine. Richard understood the severity of the situation and the danger which his condition can cause. However, Richard had no financial means to purchase the Cipap mask and Cipap machine on his own as he was already struggling to provide for his family. His wife is suffering from depression, diabetes and eye conditions, and the family has not been able to pay off their accumulated medical expenses. The weight of debt had even prevented his wife from seeking a consultation at the eye centre to ascertain if the lump at the back of her eyes was cancerous.

In the midst of his trauma, Richard saw a helping hand from HCA donors who supported him - He received the Cipap mask and Cipap machine on loan. The machine has been of a great help to him and he could not have been more appreciative.

Mr Richard Goh Cheng Huat,
HCA beneficiary

“

I never wanted to suffer from sickness. The injections and medicine are really overwhelming. With these health issues, I live my life day by day and I do not know how much time I have left. Thanks to the HCA donors, I can persist up till today.

”



SingHealth DukeNUS
ACADEMIC MEDICAL CENTRE
EMERGENCY MEDICINE

BUTTRESTING OUR FRONTLINE DEFENCE

Emergency medicine is the linchpin of any hospital; the Accident & Emergency (A&E) department is the first point of entry for most patients, and our Emergency Medicine doctors and nurses are the first to respond and provide immediate urgent care to stabilise patients.

The need to better provide rapid, consistent and best evidenced emergency care for every patient in the face of emerging healthcare complexities has become more pressing over the years. In response to this, SingHealth Duke-NUS Academic Medical Centre set up the Emergency Medicine Academic Clinical Programme (EM ACP) in 2018, to bring together the Emergency Medicine community from Changi General Hospital, KK Women's and Children's Hospital, Sengkang General Hospital and Singapore General Hospital; to consolidate best practices, innovation and technology; and to serve as a springboard for cutting-edge ideas.

A SingHealth cluster resource, EM ACP aspires to be a platform for sharing of best clinical practices amongst the four Emergency Departments, a bridge for collaboration with other healthcare stakeholders and a one-stop hub that the Emergency Medicine community can depend on for direction, resources and support academically. As the healthcare landscape continues to evolve, the EM ACP is committed to work towards gold standards in EM practice through excellence in EM research, education and innovation.

Clinical Professor Goh Siang Hiong
Academic Chair Emergency Medicine Academic Clinical Programme,
SingHealth Duke-NUS education and innovation

Supported by the CGH Health Fund, EM ACP has kick-started two projects that have real life implications on our patients and staff across Singapore.



BiPAP for A&E Patients



Use of Facial Recognition & Behavioural Analytics to enable Real-Time Monitoring of Patients in the Emergency Department

LOOKING FORWARD:

- Modelling after centres of excellence in Emergency Geriatrics, Toxicology and Artificial Intelligence
- Reshaping care for our elderly patients
- Developing a future-ready workforce
- Leveraging on big data for predictive analysis



MAKING STRIDES AGAINST BREAST CANCER

Singapore has the highest incidences of breast cancer in Southeast Asia. This is a statistic that CGH's Breast Centre does not take lightly. Cognizant that advances in diagnostic techniques and an increase in effective treatment options can significantly improve breast cancer survival rates, our clinicians have partnered with the CGH Health Fund to create new streams of breast cancer research and education.

To this end, the CGH Breast Centre Fund was set up in 2020. Made possible by a generous contribution from a late patient's loved one, this fund provides the foundation for the hospital's Breast Centre to explore and pioneer breakthroughs that will change how we understand, diagnose, treat and cure breast cancer.



BB

The CGH Breast Centre Fund aims to enhance our current care model, expand our scope of treatment strategies, explore innovative ways for holistic care, extend care beyond the patients and enrich patients' experience.

99

Prof Tan Su-Ming
Head, Division of Breast Surgery
Changi General Hospital

**TOTAL AMOUNT
RAISED FOR FY21**

\$141,080

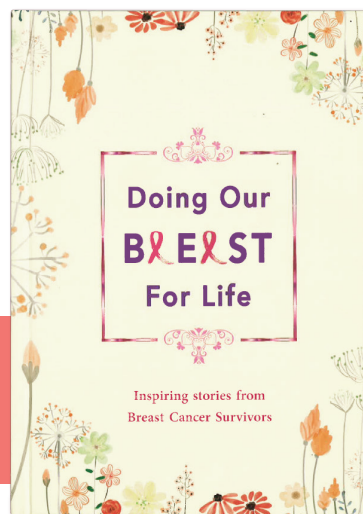
**TOTAL NUMBER
OF DONORS**

47

In collaboration with CGH's Breast Centre, CGH Health Fund initiated a 'Doing Our Best for Life' campaign to raise awareness for breast cancer and fund the Centre's research, public education and survivor support programme.

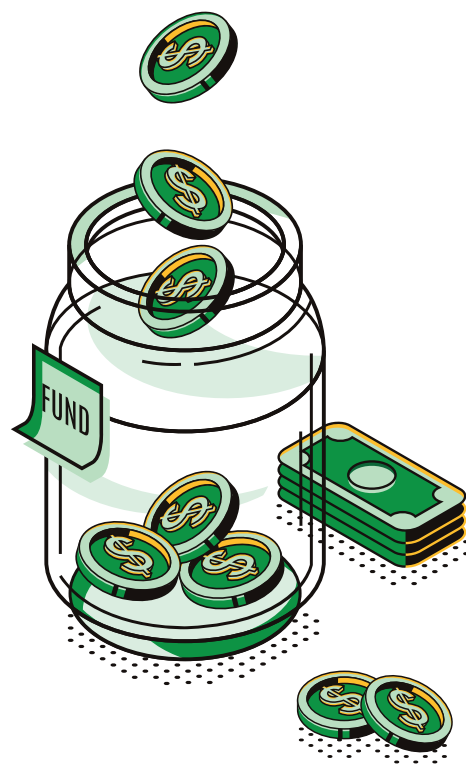
Driven by the desire to inspire hope among breast cancer patients and their loved ones, this campaign centres the voices of breast cancer survivors in its fund-raising efforts.

Several breast cancer survivors came together to share their stories of struggle and hope, which were published in a book. These books were given to donors as tokens of appreciation.



CULTURE OF GIVING

As a Caring hospital, giving back is very much a part of the hospital's DNA. The CGH Health Fund has always benefitted from the robust support of our staff and patients, who are eager to empower patients in financial need and open doors of opportunities. To build on this culture of giving and strengthen the bonds of our Caring community, we launched a series of new and exciting fundraising initiatives.



CGH STAFF GIVING

1,098

TOTAL STAFF DONORS
as at 31 Dec 2021

19.96%

STAFF GIVING PERCENTAGE
as at 31 Dec 2021

STAFF DONOR APPRECIATION GIFT

1st from the series: Nurses Brickman Set





CHANGI RUN 2021

The CGH Health Fund launched its very first virtual run fundraiser on 12 January 2021. With the purpose of building on the solidarity of the eastern region in Singapore, net proceeds from this event went towards HomeCare Assist, the hospital's patient welfare programme.

The central theme of the virtual run was #WeDareToCare, which served as a rallying call among our staff and public participants to support our needy patients in their recovery journey at home after being discharged from CGH.



\$73,442
AMOUNT RAISED



1,272
NO. OF PARTICIPANTS

CATEGORIES

10km individual
50km individual
50km group

NOVELTY CATEGORIES

Sonic Feet (10km & 50km),
Steady Feet, Happy Feet,
Social Feet, Caring Feet

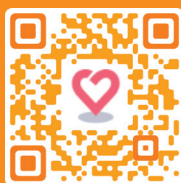


EVENT SUPPORTERS



Your Gift of Gratitude

When you want to do more than say “Thank You”, make a gift to help the needy patients in our community



GIVING.SG CAMPAIGN PAGE

Gift of Gratitude Campaign



Our patients make up the fabric of CGH's Caring community, with many grateful for the treatment and attention they receive at the hospital. However, not many are aware of how to express their gratitude or take on a more proactive role in supporting healthcare.

The CGH Health Fund bridged this gap with a 'Gift of Gratitude' campaign. This campaign gives patients and family members a chance to convey their thanks directly to their care team through a written note or choose to make a gift in recognition of the dedication of our healthcare professionals.

This year-round campaign was unveiled in conjunction with CGH's Kindness Week in July 2021.

In the 20 hours, we received*

\$7,789

one-time
donations

\$9,240

monthly donations
per year

*No active solicitation

THANK YOU

We are immensely grateful for the philanthropic and in-kind gifts received during these challenging times. It was heartening to witness the generosity of our community while we were in the throes of a pandemic.

We are also encouraged by our long-time donors who continue to journey with us and believe in the CGH Health Fund's vision.

\$10,000 and above

- Agency For Integrated Care
- Cheng Jin Fu
- Chua Guat Mui
- D. S. Lee Foundation
- Foo Jee Kin
- Ho Ching
- Jain Rajan Jagdish
- Low Boon Yong
- Medel Pte Ltd
- Ong Wee Pin
- Phua Tiak Peow
- President's Challenge NCSS
- Ratna D. Santosa
- South East Community Development Council
- Tan Siew Kia

\$5,000 to \$9,999

- Chia Swee Tin
- Chong Stephen Yan Foo
- Liew How Mei Marilyn
- Lim Tian Ka Vincent
- Pok Cheng Chong
- Tan Boon Hwee

\$2,000 to \$4,999

- Cheng Mei Chen
- Chia Ser Huei
- Ching Lee Kian
- Fong Poh Chee
- Koh Soh Chang
- Low Cheng Ooi
- Magdalin Cheong
- Neo Group Foundation
- Ng Wai Hoe
- Tan Liang Hua Helena
- Wong Mei Lan Rita
- Wong Yew Chung
- Yap Hwa Ling
- Yeo Swee Lin Lynn

\$1,000 to \$1,999

- Ang Su Yin Angelina
- Anne George
- Chong Lay Choon
- Chua Tuan Moo
- Deepak Charadva
- Goh Peck Hong
- Goh Mee See
- Ho Chia Yue
- Lee Lee Lian
- Lew Fei Lim Yvonne
- Lye Nyap Chng
- Michael Teo
- Oh Hong Choon
- Ong Siew Yit
- Paresh Zaveri
- Seah Poh Lin Selina
- Swee Choon Co Pte Ltd
- Tan Yuen Lan Diana
- Tan Toh Hui Leonard
- Teo Lai Hock Jeffrey
- Teo Hong Lim
- Thomas Ong
- Tiah Ling
- Wong Pui Yee

\$500 to \$999

- Authilakshmy D/O N Manikam
- Business Edge Personnel Services Pte Ltd
- Chai Siang Chew
- Chay Oh Moh
- Claire Rama Stephen
- Fe Richard Junior Young
- Feryana Halim
- Goh Siang Hong
- Goh Wan Pin
- Goh Hui En Rebecca
- Gormit Kaur d/o Bachan Singh
- Gupta Gaurav
- Hoe Ee Wern
- Leong Poi Fong Iris
- Liew Boon Wah
- Lim Ah Lay
- Lim Fung
- Lu Kuo Sun Peter
- May Myat Moe
- Mohamed Asri
- Mohan Raj Gupta
- Narendran Kanagasuntheran
- Nelly Pang
- Ng Bee Chin
- Park Joon Jae
- Peh Libby
- Rakesh Dhir
- Sim Mui Kian
- Sri Rahayu Bte Masjum
- Sok Hourng
- Sumitha Gururai Purohit
- Tan Su Lin Jenny
- Tan Khoo Peng Jonah
- Tan Soh Ping
- Tang Boo Teck
- Tay Chui Guek
- Tay Ching Leng
- Tay Hong Siang Peter
- Teo Kah Yen Abel
- Teoh Su Rene

CGH Department Fundraising

- Advanced Practice Nurse Development
- Anaesthesia Department
- Care Coordination
- Case Management Department
- Community Nursing Department
- CSSD Department
- SOC Geriatric Medicine Clinic
- Ward 15 Department
- Ward 18 Department
- Ward 19 Department
- Ward 23 MICU Department
- Ward 44 Department

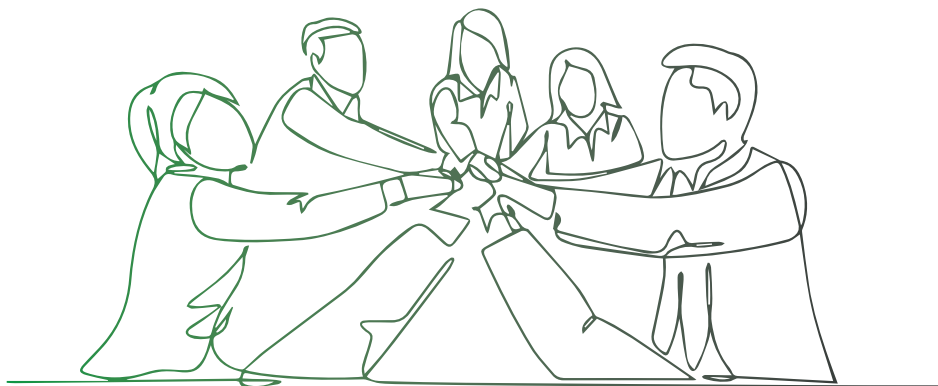
Gold tier participation

- Business Office
- Corporate Development
- Corporate Planning
- Development Office
- Lung Clinic & Integrated Sleep
- Simulation Centre
- Standards & Policies

SPONSORS

A big thank you to our in-kind donors for supporting health care professionals in this challenging period.

- 3C Resources
- Abbott Laboratories
- Anne Tan and donors
- Anonymous
- Atos
- Avomin
- Bakery Brera & Fine Foods Pte Ltd
- Bedok Youth Network
- Bruno's Pizzeria
- BTS Army
- DBS Bank
- Dignity Kitchen
- Diversey
- Donor
- Dreamkids kindergarten
- Eatz Catering Services Pte Ltd
- F&N
- Gemini
- GKE Agritech Pte Ltd
- Goodmates.sg
- Havas Singapore
- Haw Par Group
- iGift
- Kenny Rogers
- Kindness Mart Pte Ltd
- Koufu
- Kowloon Club, Bakery Cuisine
- Marigold
- Ministry of Culture, Community and Youth
- Ms Billion Chng
- New Leaf
- Nila Aromatherapy Bar
- One Step Forward
- Pasir Ris East CC
- Philip
- Pine & Co
- PizzaFace
- Popeyes
- Ravel Communications
- Regina
- Rozzalina Binte Ramli
- Singapore Armed Forces
- SAS Institute Pte Ltd
- Siglap South CC Youth Network Group
- Singapore Airlines
- The Social Kitchen
- Sunil Satyanathan
- Swensen's
- Tan Niap Koon & family
- Temasek Foundation
- Tower Research
- Wheathfields Lohmann Singapore Pte Ltd
- Yasmeen Banu
- Yeo's
- ZOLL Medical Corporation



— meet the team —

CGH DEVELOPMENT OFFICE



Marc Chan
Assistant Director



Linda Ang
Manager



Caroline Rajandran
Senior Associate Executive



Siti Firzanah
Senior Associate



Siti Nurhidayah
Senior Associate



Changi
General Hospital
SingHealth



 www.cgh.com.sg/giving

 giving@cgh.com.sg